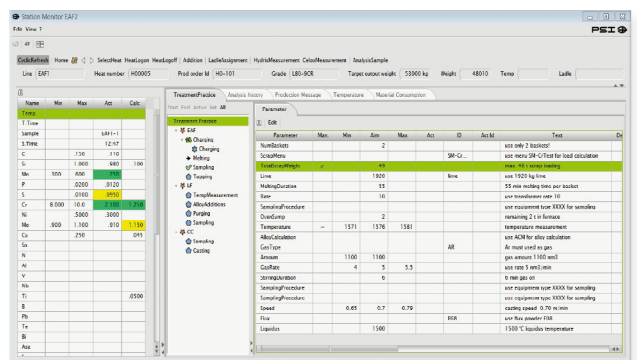
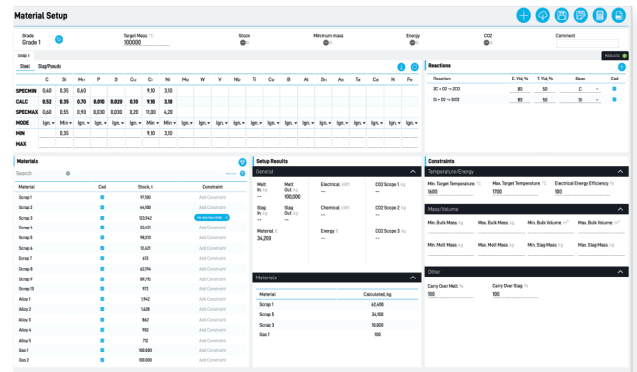


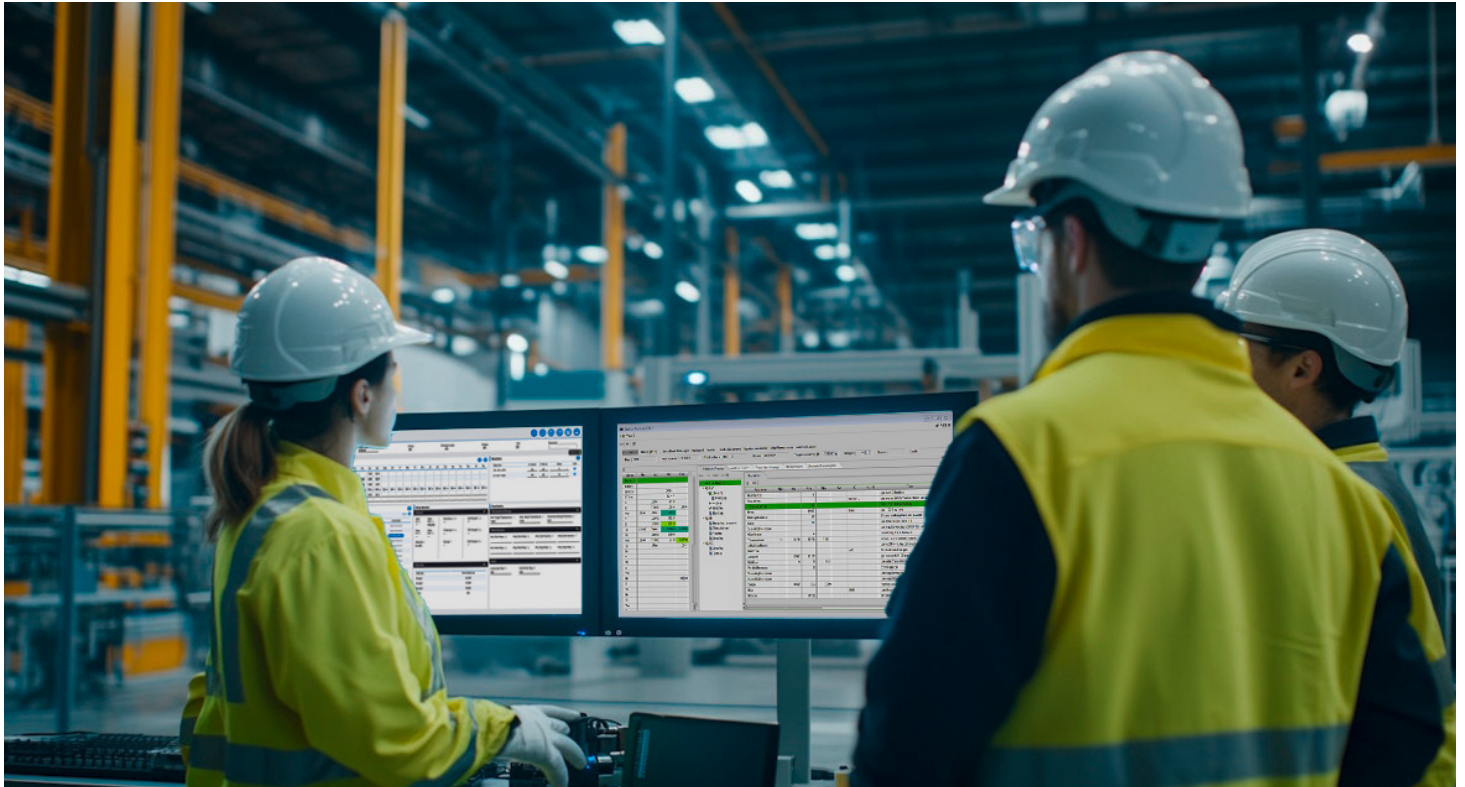


control maps now in PSImetals Service Platform

Precision in production, excellence in optimization

Integrating control maps into the PSImetals Service Platform advances smarter, more sustainable metals production. This enables steelmakers to optimize scrap quality, charge mix strategies, and production campaigns all within a single platform.





Key benefits of control maps in PSImetals

- ✔ control maps enables real-time scrap quality assessment and charge mix optimization, reducing costs and improving material efficiency.
- ✔ The integration supports reduction of CO₂ emissions by considering Scope 1, 2, and 3 emissions including carbon and oxygen lancing.
- ✔ Steelmakers can reduce costs, improve productivity, and support sustainability based on real-time energy prices, raw material availability, and operational constraints.
- ✔ control maps is fully integrated with PSImetals Service Platform, requiring no additional sensors, interfaces or other effort.
- ✔ PSI's industrial software expertise and qoncept's metallurgical knowledge combined deliver a comprehensive, future-ready solution.