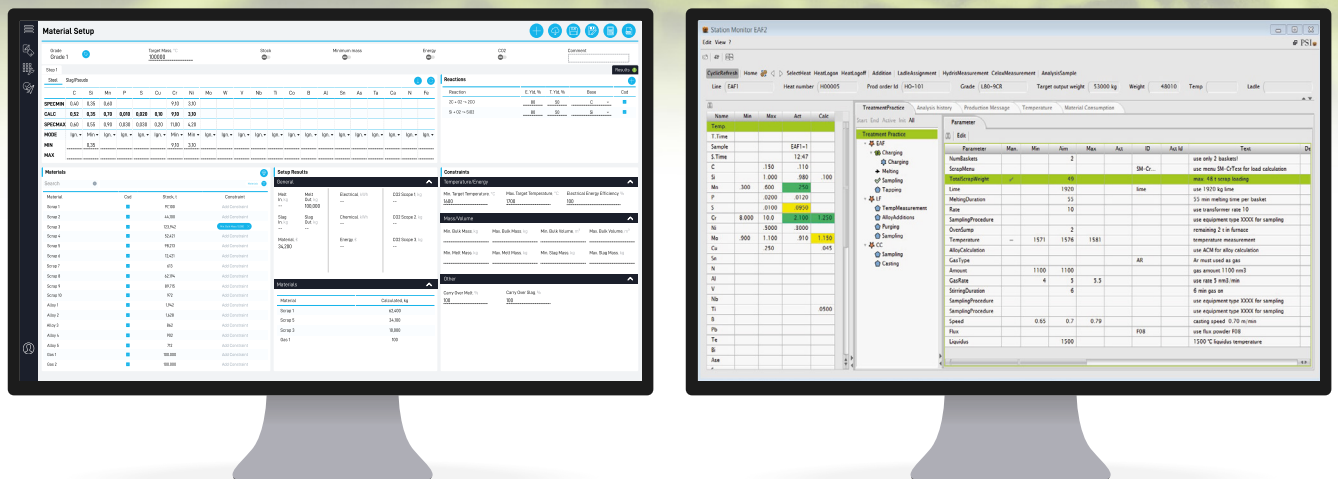


Precision in production, excellence in optimization

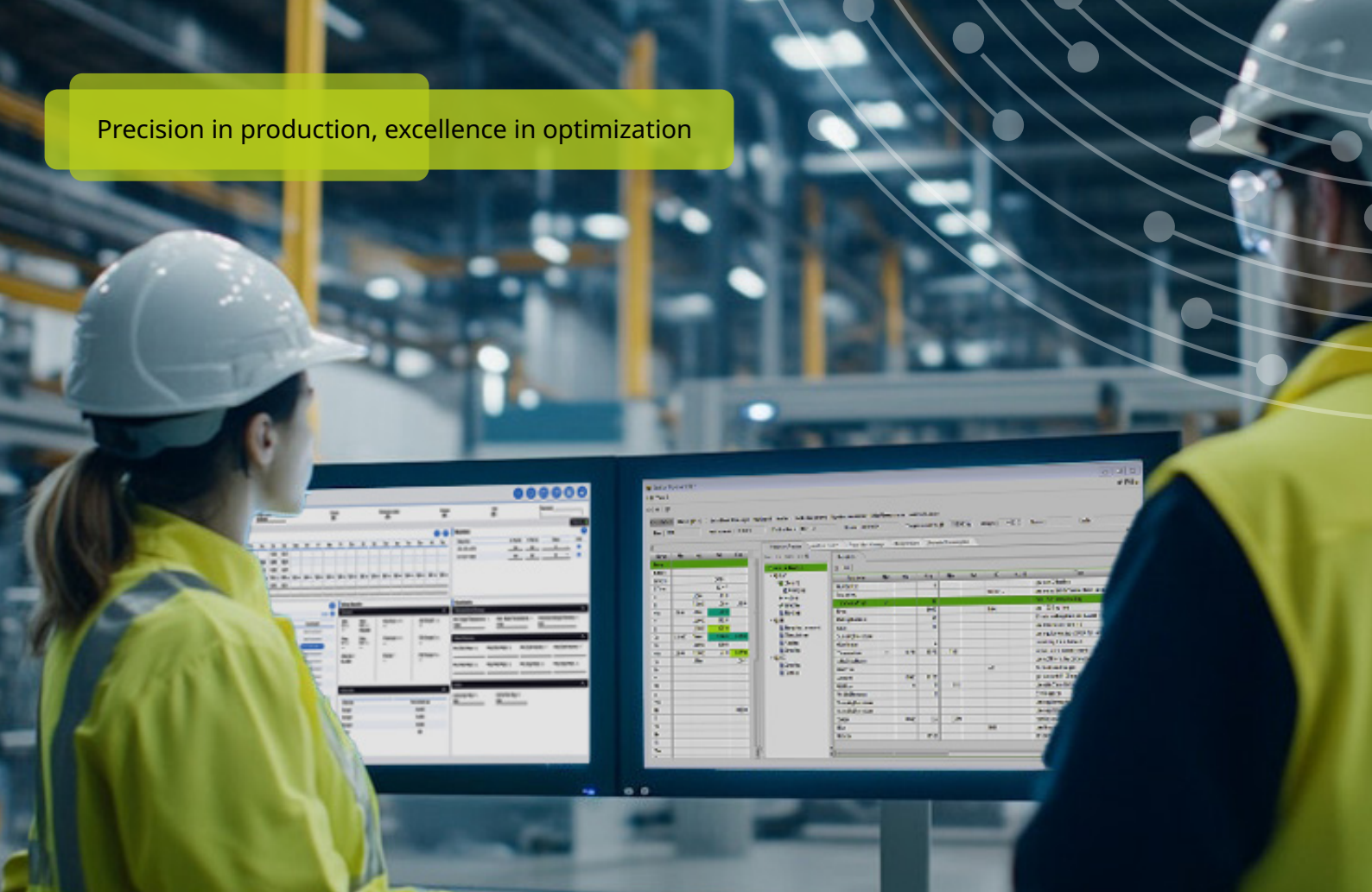
control maps now in PSImetals Service Platform



Integrating control maps into the PSImetals Service Platform advances smarter, more sustainable metals production, enabling steelmakers to optimize scrap quality, charge mix strategies, and production campaigns—all within a single platform.



Precision in production, excellence in optimization



Key benefits of qontrol maps in PSImetals

- + qontrol maps enables real-time scrap quality assessment and charge mix optimization, reducing costs and improving material efficiency.
- + The integration supports reduction of CO₂ emissions by considering Scope 1, 2, and 3 emissions including carbon and oxygen lancing.
- + Steelmakers can reduce costs, improve productivity, and support sustainability based on real-time energy prices, raw material availability, and operational constraints.
- + qontrol maps is fully integrated with PSImetals Service Platform, requiring no additional sensors, interfaces or other effort.
- + PSI's industrial software expertise and qoncept's metallurgical knowledge combined deliver a comprehensive, future-ready solution.

PSI Software SE - Process Industries & Metals
Dirksenstraße 42-44 · 10178 Berlin · Germany
info@psi.de · www.psi.de

© PSI Software SE 05-2025

