

PSI penta Industry Solutions

ERP + MES for the electronics industry

In hardly any other industry are innovation cycles as short as in the electronics industry. At the same time, companies face a wide variety of variants and stringent quality requirements.

If electronics companies want to ensure consistent on-time delivery and competitive prices over the long term, intelligent ERP and MES software can help ensure fully optimized and reliable processes.

When making your decision, place particular emphasis on industry-specific processes and integrated functions for quality management, variant management, and optimized detailed planning.

PSI is a provider that understands and addresses the specific challenges and requirements of your industry.

Together, we will identify the best solution for your company!

These customers rely on
PSI penta ERP + MES



Having an integrated view of capacity requirements and postings from a single system is one of the key advantages of the ERP-MES solution, alongside its support for numerous processes.

Michael Schieferer, Head of IT at Digital Elektronik GmbH

Top three functions

1. Efficient quality management

With ERP software, companies achieve optimal conditions for quality assurance, ensuring low error rates and streamlined processes through a centralized database and full traceability. PSI's integrated ERP quality management module allows organizations to record, manage, and evaluate quality characteristics for measurement and test data in production and procurement.

[Learn more](#)

2. Adaptive delivery date determination

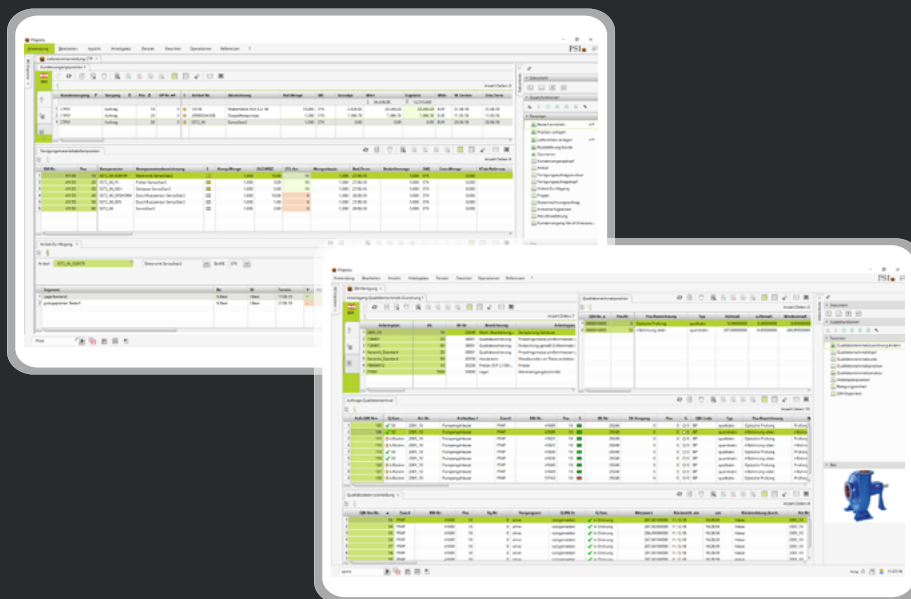
Material availability and capacity are fully accounted for through the bill of materials structure for all orders. This enables the sales team to compare customer requirements with the current production and delivery situation in real time.

[Learn more](#)

3. Comprehensive shop-floor data capture

The ideal solution is a shop-floor data capture system that ensures timely, user-friendly, and error-free collection. It immediately validates the results for plausibility and automatically transfers them to the respective leading software. With such a system, production data is captured accurately, ends up in the right place without manual effort, and is ready for direct processing.

[Learn more](#)



Industry solution at a glance - your advantages

- ✔ **Order management in the electronics industry:** ERP providers with in-depth industry electronics expertise
- ✔ **Sophisticated finite capacity scheduling:** Detailed planning of work orders and growing BOM lines
- ✔ **Intelligent planning with AI:** Adaptive planning optimizes the use of available materials and production capacities
- ✔ **Flexible production platform:** Adapt processes and interfaces quickly and easily
- ✔ **Variant management:** Keep variants under control, including cost accounting

© PSI Software SE 04-2026, image source: © PSI Software SE